

ANNUAL REPORT

2018



A MESSAGE FROM

Don Goldman

Executive Director & CEO



Fay Balk

Board President

Dear Friends,

As we write this letter for the 2018 annual report, it is actually well into 2019 and we are preparing for the Jewish New Year 5780. Last year, like the dozen before it, has been very busy as we continually adjust to the changing needs of both the Jewish and general communities. We'll share two highlights here. Check out the following pages for a look at the wonderful services JFS provides to over 7,000 clients each year.



In 2018, JFS received the Food Pantry of the Year award from Harvesters—a great honor given the number of nonprofits across the KC metro addressing food insecurity. But rather than rest on our laurels, we built upon the valuable connections among our clients, staff and volunteers to launch *Kesher KC*. *Kesher* is the Hebrew word for “connection,” which defines the nature of the expanded program: working with community partners to connect families in need with a comprehensive array of resources and services to help them transform their lives.



We also experienced growth in our *You Be You* program, which served over 20,000 students in 23 schools in 2018—spanning both the southern and eastern edges of our community from Olathe to Fort Osage. *You Be You* is a school-based mental health promotional campaign that helps teens build resilience and better cope with risk factors that contribute to mental health conditions. In the coming year, we will integrate school-based counseling services into the program to complement school services.

As always, we are grateful for the support of the community, and we look forward to advancing our mission of providing essential human services for people facing challenges in everyday life or times of crisis—regardless of faith, age, culture or lifestyle.

With gratitude,

Don & Fay

Last year, JFS provided counseling, advocacy, education, and essential human services to more than 7,000 people in greater Kansas City.

2018 HIGHLIGHTS



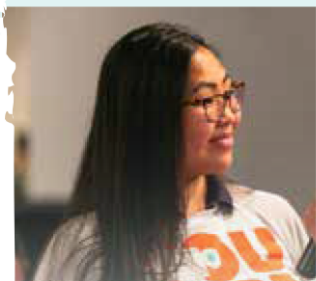
Kesher KC

Piloted in 2018 as an extension of the JFS food pantry, Kesher KC provides on-site social workers, employment coaches and other resources to help struggling families.



As the primary caregiver to her granddaughter and adult handicapped son, Sharon struggled to maintain employment and her own health. Thanks to JFS, Sharon receives mental health support, financial management education, and supplemental food for her family.

“Without JFS, I would have slipped through the cracks, continuing a free fall in financial and emotional ruin.” —Sharon, Kesher KC Client



You Be You

The teen mental health program has grown to 23 metro schools, reaching over 20,000 teens in 2018. This student-led effort promotes positive well-being, encourages teens to reach out for help, and teaches how to recognize when friends are struggling.



“You Be You has made me aware of how people treat each other. Sometimes awareness is all you need to make an impact.” —Tessa, University Academy student



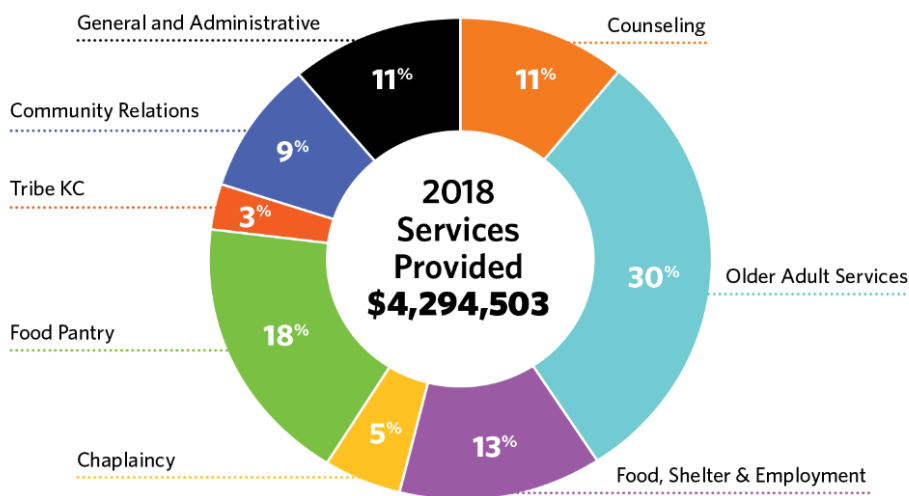
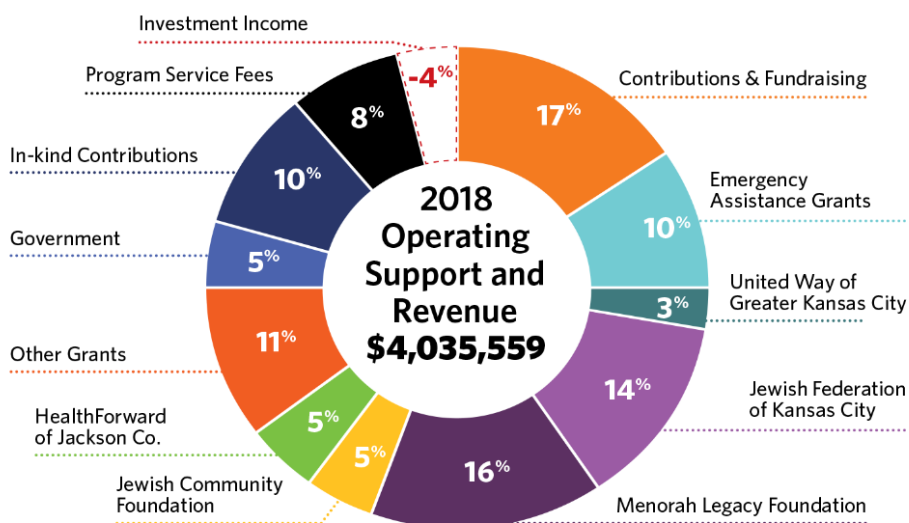
Family Empowerment Program

JFS supports families in the Shawnee Mission school district by addressing issues that contribute to financial instability and push families into homelessness. JFS provides intensive case management and advocacy for 35 families since the program's start in 2018, keeping students in school and families in their homes.

For the first time in many years, Debra has a safe and stable home for herself and her granddaughters.

“JFS has changed my life. You have helped me rebuild my credit, deal with medical debts, and the girls and I have a roof over our heads. We would be in a bad situation without you. You are my guardian angels.” —Debra, FEP Client

FINANCIAL SUMMARY



Audited financial statements, Form 990 and a list of financial supporters can be found at www.jfskc.org

VOLUNTEER IMPACT

7,925 
volunteer hours

596 
volunteers

With a value of 
\$197,808

YOUR 2018 IMPACT BY THE NUMBERS

FAMILY LIFE EDUCATION

3,577 Programs Attended



VOLUNTEERS

7,925

Hours Volunteered

ASSISTANCE

282

Families Helped



FOOD PANTRY

237,500 Meals Provided

OLDER ADULT VISITS

1,250

Help@Home Visits

1,867

Care Management Visits

20,000 Students Engaged in Mental Health Activities



JET EXPRESS

4,700

Rides Given



EMPLOYMENT

378

Career Participants



COUNSELING

3,047 Personal Sessions

CHAPLAINCY

2,220

Spiritual Care Visits

PRIYA

8 babies

Joined KC families since 2015

Thank you for all you've helped achieve!

OUR MISSION

Our mission is to support and strengthen the lives of children, families and older adults throughout Kansas City, building stronger families and communities. We connect those in need with a breadth of services and resources—regardless of faith, age, culture and lifestyle.

CONNECT WITH US

🔗 jfskc.org

📘 facebook.com/jfskc

🐦 [@jfskc](https://twitter.com/jfskc)

📷 instagram.com/jfskc

JFS AT THE J

5801 W. 115th Street
Overland Park, KS 66211
Tel: 913-327-8250
Fax: 913-327-8222

JFS BROOKSIDE EAST

425 E. 63rd Street
Kansas City, MO 64110
Tel: 816-333-1172
Fax: 816-333-1176



2018 BOARD OF DIRECTORS

Executive Committee

Fay Balk
President

Lara Pabst
Vice-President

Kelly Somberg
Vice-President

Adam Matsil
Treasurer

Erin Berger
Secretary

David Kaseff
Immediate Past President

Members

Diane Azorsky

Andrea Bacon

Gail McCann Beatty

Jeff Bell

McClain Bryant

Sam Goller

Evie Grant

Jenny Isenberg

Beth Liss

Rochelle Pelofsky

Ken Schifman

Jill Shapiro

Noah Slabotsky

Jeff Stolper